



because it works



DUOMIX PU 460 / DUOMIX PU 280 / PU GUN 4040

WWW.WIWA.COM

POLYUREA – THE EQUIPMENT PROGRAM



PU GUN 4040



DUOMIX PU 280 Foam

The innovative dual-
component
polyurea and PU
foam systems
for large and small
surfaces

As a high-quality coating material, polyurea is becoming more and more important. Applications include corrosion and wear protection, joint sealing as well as sealing and repair of virtually all vertical and horizontal surfaces. Due to its fast processing time, high elasticity, extreme temperature resistance and excellent adhesion properties, polyurea is far superior to conventional coatings.

Buildings and containers must often be insulated against heat and cold – particularly during renovation. Insulation using PU foam is particularly suited for this purpose, since it is possible to completely coat the (roof) surfaces to any desired thickness, providing much more effective thermal insulation than conventional materials.



DUOMIX 280 PLUS



DUOMIX 460

TECHNICAL DATA	DUOMIX 280 FOAM	DUOMIX 280 PLUS	DUOMIX 460
Mixing ratio	1 : 1 / 2 : 1	1 : 1 / 2 : 1	1 : 1 (others on request)
Nominal pressure	15 : 1	25 : 1	30 : 1
Output per cycle	144 cm ³	86 cm ³	194 cm ³
Max. air inlet pressure	8 bar	8 bar	8 bar
Max. application rate	8.6 litres per minute	5.16 litres per minute	12 litres per minute
Material flow heaters	6 kW	6 kW	12 kW
Heat output of hose package	47 W/m	47 W/m	47 W/m
Max. hose length	48 m	48 m	138 m ¹
Voltage/phases	400 V / 3 P	400 V / 3 P	400 V / 3 P ²
Max. power consumption	9 kW	9 kW	16.5 kW
Max. operating pressure	up to 120 bar	up to 200 bar	up to 240 bar
Air consumption at 8 bar	900 litres per minute	900 litres per minute	1200 litres per minute
Weight	88 kg	88 kg	165 kg

¹Max. hose length for PU 460 / 138m / at 400V / 3P
 Max. hose length for PU 460 / 93m / at 230V / 3P
 Max. hose length for PU 460 / 48m / at 230V / 1P

²PU 460 is also available in the following designs:
 Voltage 230V / 3P, power consumption 16.5 kW
 Voltage 230V / 1P, power consumption 14.5 kW

WIWA DUOMIX PU 460



Polyurea coating of large surfaces

The DUOMIX PU 460 is a powerful dual-component mixing and dosing system for processing PU foam, polyurethane and polyurea. Using this system, you can apply seamless and jointless coatings and linings in a wide variety of applications, even on large surfaces, on a very economic basis. Due to the fixed mixing ratio of the pumps, exact dosing of both components is guaranteed at all times. Simple exchange of the material pumps allows you to quickly change the mixing ratio from 1:1 up to 10:1. With this system concept, it is possible to cover virtually all mixing variants in the field of in-situ foam or polyurethane/polyurea elastomers.



Hose bracket mounting kit



Protection hood for control cabinet



Mounting kit with 30L stainless steel feed drums

Protecting Sealing Insulating

Water-based construction:

- Swimming pools
- Pond linings
- Fish farms
- Drinking water reservoirs
- Chemical-proof collecting tanks
- Sewage treatment plants

Construction:

- Industrial floors and walls
- Hangar floors
- Roof insulation and sealing
- Cavity insulation
- Park decks
- Noise insulation of track beds
- Bridge sealing
- Concrete refurbishment
- Injection of cracks

Loading areas:

- Pickup- and truckbeds
- Rolling stock
- Ferries

Pipeline construction:

- Internal and external coating of gas, water oil and chemical pipes

Leisure parks:

- Scenery
- Figures

Offshore Industry:

- Wind turbines
- Ship decks
- Submarines
- Buoys

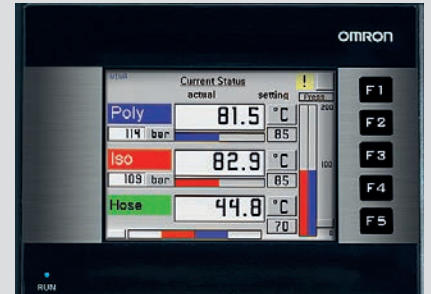


DUOMIX PU 460

WIWA DUOMIX PU 460 – JUST A QUICK LOOK AT THE DETAILS

Touchscreen display:

With its 3.5" touchscreen display and total of five function keys, the control panel offers a comprehensive range of input and output options. The option to enlarge the size of the temperature display allows you to easily monitor the actual temperature of both components even when working with very long hoses.



Effective phase monitoring:

Indicator lamps above the touchscreen display show which of the three electrical phases are in operation.



Two power stages for the heaters:

Since a full range of power connections is not always available on-site, the WIWA DUOMIX PU 460 is fitted as standard with a selector switch to reduce the heat output.



Powerful proportioning pump:

The system is supplied with both components by means of the feed pumps and meters them exactly. The WIWA DUOMIX PU 460 uses the same DUOMIX system that has been tried and tested in thousands of applications. If necessary, you can refit the PU 460 for a different mixing ratio in just a few simple steps.



MAKES THE DECISION REALLY EASY



Short component heat-up times:

Both components are heated very quickly to the set processing temperature in separate, powerful material flow heaters. Once the set nominal temperature for processing of the material is reached, the fluid heater switches off automatically.



Compressed air control:

The air pressure regulator cluster for control of the spray gun, the feed pumps and the proportioning pump, is a high-precision unit with excellent response. It is located directly on the control cabinet next to the pressure gauges for easy accessibility.



Highly mobile:

Due to its compact construction and stable pneumatic tyre cart, the WIWA DUOMIX PU 460 is perfectly suited for the constantly changing conditions of on-site deployment. To improve the mobility of the cart, it is fitted with lifting eyes and fork lift pockets.



Practical holding tubes:

The feed pump receptacles that are fixed on the DUOMIX PU 460's cart make it possible to easily transport and store the diaphragm or piston pumps being used. To avoid undesirable chemical reactions on the feed pumps, you need only to fill the holding pipes with a suitable release agent.

WIWA DUOMIX PU 280 PLUS – THINKING THAT LITTLE BIT FURTHER



The ideal start to professional PU coating technology for small surfaces

In addition to the corrosion, sealing and wear protective coatings that you can apply using the WIWA DUOMIX PU 280 PLUS, the WIWA polyurea system can be used in many other areas of application including processing in-situ PU foams for quick and easy insulation and sealing of roofs and walls.

Just like its big brother, the PU 460, the WIWA DUOMIX PU 280 PLUS is a pneumatically driven dual-component mixing and dosing system for processing PU foam, polyurethane and polyurea. Thanks to its light weight and compact construction, the WIWA DUOMIX PU 280 PLUS is ideal for on-site use for coating smaller surfaces. Even with a system as compact as this one, the material flow heater with its 6 kW output makes possible hose lengths of up to 48 m. As standard, the WIWA DUOMIX PU 280 PLUS is designed for spraying with a fixed mixing ratio of 1:1. With a simple exchange of material pumps, you can also change the mixing ratio of the WIWA DUOMIX PU 280 PLUS to a fixed 2:1 .



PROTECTING SEALING INSULATING

Construction:

- Thermal insulation
- Sealing balconies
- Anti-slip coatings
- Foundation sealing
- Concrete refurbishment
- Insulation of cavities
- Noise insulation on loading ramps
- Decorative floor sealing

Structural engineering:

- Corrosion wear and edge protection

Vehicles:

- Loading areas of pickups & trucks
- Rolling stock
- Ferries
- Lining of refrigerated and rescue vehicles

Leisure parks:

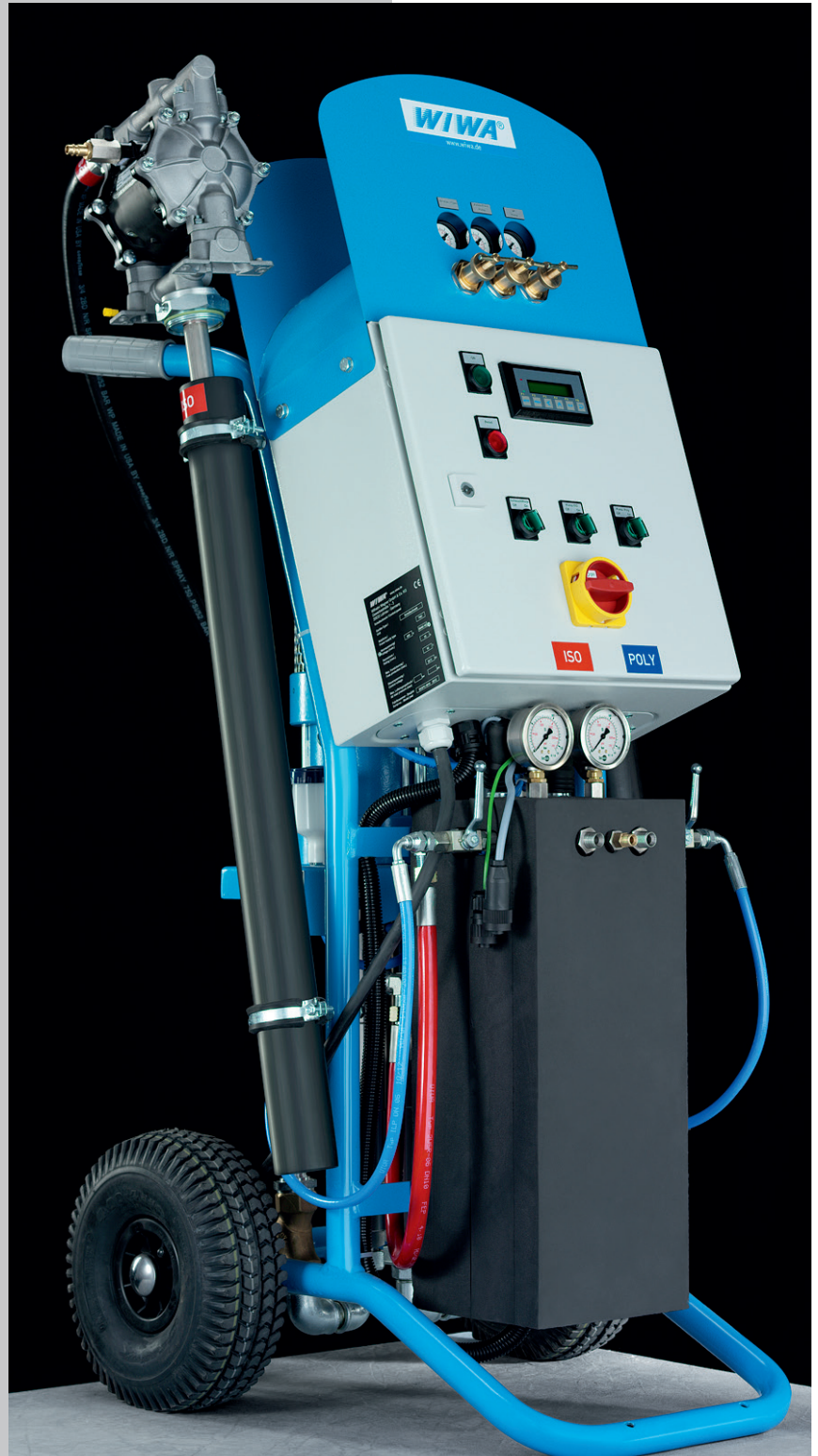
- Sets and decoration
- Figures

Collecting vessels:

- Oil, chemicals, water, separators, cisterns

Food sector:

- Butcheries
- Bakeries
- Restaurants



DUOMIX PU 280 PLUS

WIWA DUOMIX PU 280 FOAM



The ideal start to
professional
processing of PU
foams

The WIWA DUOMIX PU 280 FOAM was specially developed for the processing of PU-foams, based on experience with the WIWA DUOMIX PU 460. Due to its compact design, the PU 280 FOAM is very flexible in use. The powerful material flow heater ensures short material heating times.

The benefits at a glance:

- Short heating times using material flow heater
- No material overheating due to temperature monitoring
- Flexible in use due to wheels that are suitable for use on construction sites
- Compact and powerful, ideal for foam applications
- Clear and open design that is easy to maintain
- Integrated feed pump holders and hose rack
- Easy, intuitive operation



Sealing Insulating

Construction:

- Roof insulation
- Roof refurbishment
- Cavity sealing
- Noise insulation
- Impact noise insulation
- Thermal insulation of:
 - Roofs
 - Walls
 - Tanks
 - Pipes
 - Cold stores

Leisure parks & theatres

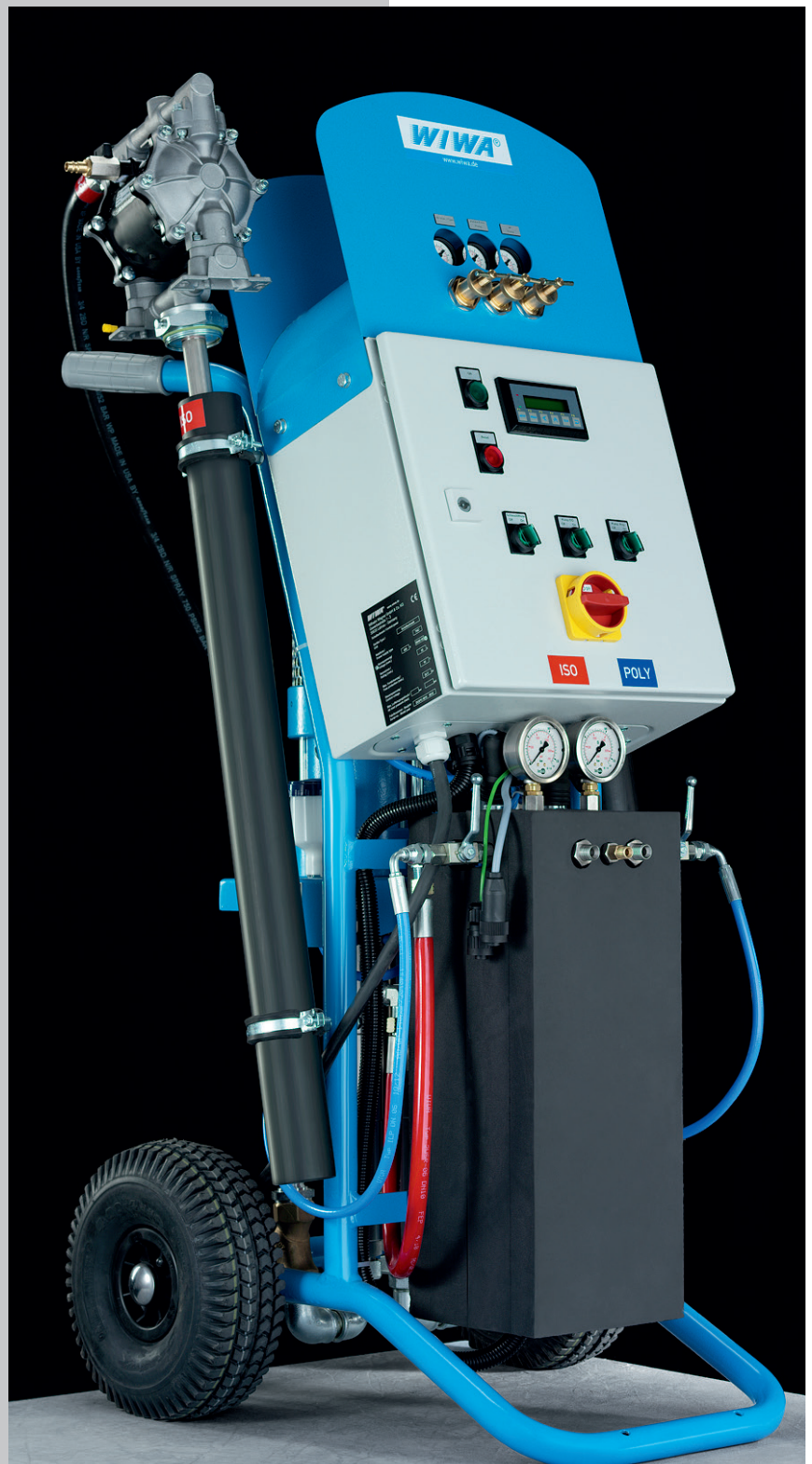
- Scenery
- Figures
- Playground equipment

Automotive engineering

- Insulation of refrigerated trailers

Industry

- Moulded parts
- Sandwich panels



DUOMIX PU 280 FOAM

WIWA DUOMIX PU 280 – THE MOST IMPORTANT FEATURES ON

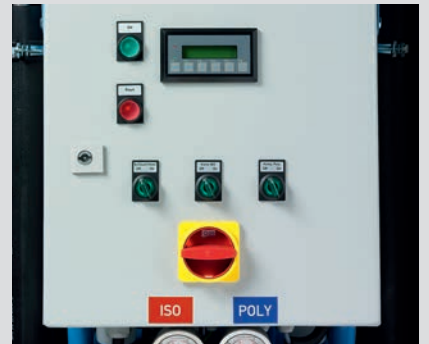
Practical hose rack:

The integrated hose rack is conveniently located above the control box on the WIWA DUOMIX PU 280. This means that you can safely and efficiently transport hose packages of up to 48 m in length so they are always where they are needed. Hose packages that are lying around on the ground and easily damaged are now a thing of the past.



Clear control panel:

The quickly accessible and clearly arranged operating elements on the front of the control box allow you to easily operate the WIWA DUOMIX PU 280 on an ergonomic basis.



Compressed air control:

The air pressure regulator cluster for control of the spray gun, the feed pumps and the proportioning pump, is a high-precision unit with excellent response. It is located directly on the control cabinet next to the pressure gauges for easy accessibility.

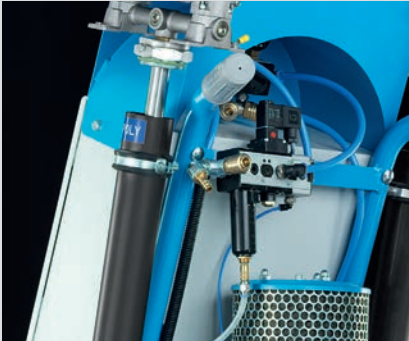


Short component heat-up time:

The A and B components of the PU material flow through the powerful fluid heater and are heated by the electrical heating elements. Once the set nominal temperature for processing of the material is reached, the fluid heater switches off automatically. .



TWO PAGES: THE BENEFITS AT A GLANCE



Practical holding tubes:

The holding tubes on the DUOMIX PU 280's cart make it possible to transport and store the diaphragm or piston feed pumps being used. To avoid undesirable chemical reactions on the feed pumps, you need only to fill the holding pipes with a suitable release agent.



Highly mobile:

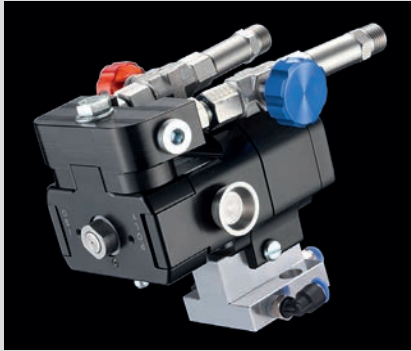
As standard, the DUOMIX PU 280 is supplied with a pneumatic tyre cart. Thanks to its compact construction and light weight, this means that you can quickly and easily transport the WIWA DUOMIX 280 to any site where you want to deploy it.



Powerful proportioning pump:

The system is supplied with both components by means of the feed pumps and meters them exactly. The WIWA DUOMIX PU 280 uses the same DUOMIX system that has been tried and tested in thousands of applications. If necessary, you can refit the PU 280 for a different mixing ratio in just a few simple steps.

WIWA PU GUN 4040 – THE DUAL-COMPONENT PU SPRAY GUN



The spray gun for processing PU foam and polyurea

The newly developed WIWA PU GUN 4040 is a further addition to our large program of innovative PU application equipment. This pneumatic operated spray gun is based on the impingement mixing technique. The poly and iso components exit spray tips directly into the mixing chamber at a pressure of up to 250 bar. The streams contact directly in front of the tips, immediately mixing the material without the need for a static mixer. Through a simple exchange of mixing chamber and tips, the output can be adjusted to meet any customer requirements..

The numerous practical features and the possibility to adjust the PU gun quickly and easily for different application requirements makes it the perfect tool for professional use. The PU GUN 4040 is not only a model of technical innovation, but also excellent ergonomics. The low weight of the gun, the optimized grip design and the variable arrangement of the fluid hose connections guarantee fatigue free operation for the coating of even the largest surfaces.

In addition to manual operation, the spray gun can also be used in an automatic coating system by simply replacing the handle with an optional adapter for pneumatic operation..

TECHNICAL DATA

PU GUN 4040 manual gun

Max. operating pressure	250 bar
Max. air inlet pressure	8 bar
Max. temperature	100 °C
Capacity	1.2 - 22 kg/min
Dimensions (LxWxH)	160 × 87 × 200 mm
Weight (approx.)	1.5 kg

PU GUN 4040 automatic gun

Max. operating pressure	250 bar
Max. air inlet pressure	8 bar
Max. temperature	100 °C
Capacity	1.2 - 22 kg/min
Dimensions (LxWxH)	100 × 70 × 92.5 mm
Weight (approx.)	1.25 kg

STANDARD EQUIPMENT



- PU GUN 4040
- Sturdy case
- Tool kit
- Grease pump
- Twist drill kit
- Protective cover (1 pc)

OPTIONAL EQUIPMENT

- Protective cover
- Adapter for automatic operation
- Flushing arrangement
- Mixing chambers
- Round stream tips
- Flat stream tips
- Various connections



PU GUN 4040

PRODUCT RANGE EXAMPLES



Headquarters and Production

WIWA Wilhelm Wagner GmbH & Co. KG
35633 Lahnau, Germany
Phone: +49 (0) 6441 609-0

www.wiwa.com

WIWA LP
107 N. Main St.
P.O. Box 398, Alger, OH 45812
Phone: +1-419-757-0141
Toll Free: +1-855-757-0141

www.wiwalp.com

WIWA (Taicang) Co., Ltd.
Taicang City
Jiangsu Province 215400, P.R.China
Phone: +86-512-53548857

www.wiwa-china.com

WIWA Middle East General Trading LLC
Jebel Ali Industrial 1
DUBAI, United Arab Emirates
Phone: +9714-884-8220

www.wiwa-middleeast.com



WIWA FLEXIMIX electronic plural component coating unit



WIWA fluid transfer pumps for nearly all uses



WIWA DUOMIX dual-component airless paint spraying systems



WIWA Airless, Air Combi and Hot Spray units



WIWA POWERPACK 2K XXL Hydraulic Systems



WIWA Ram Press